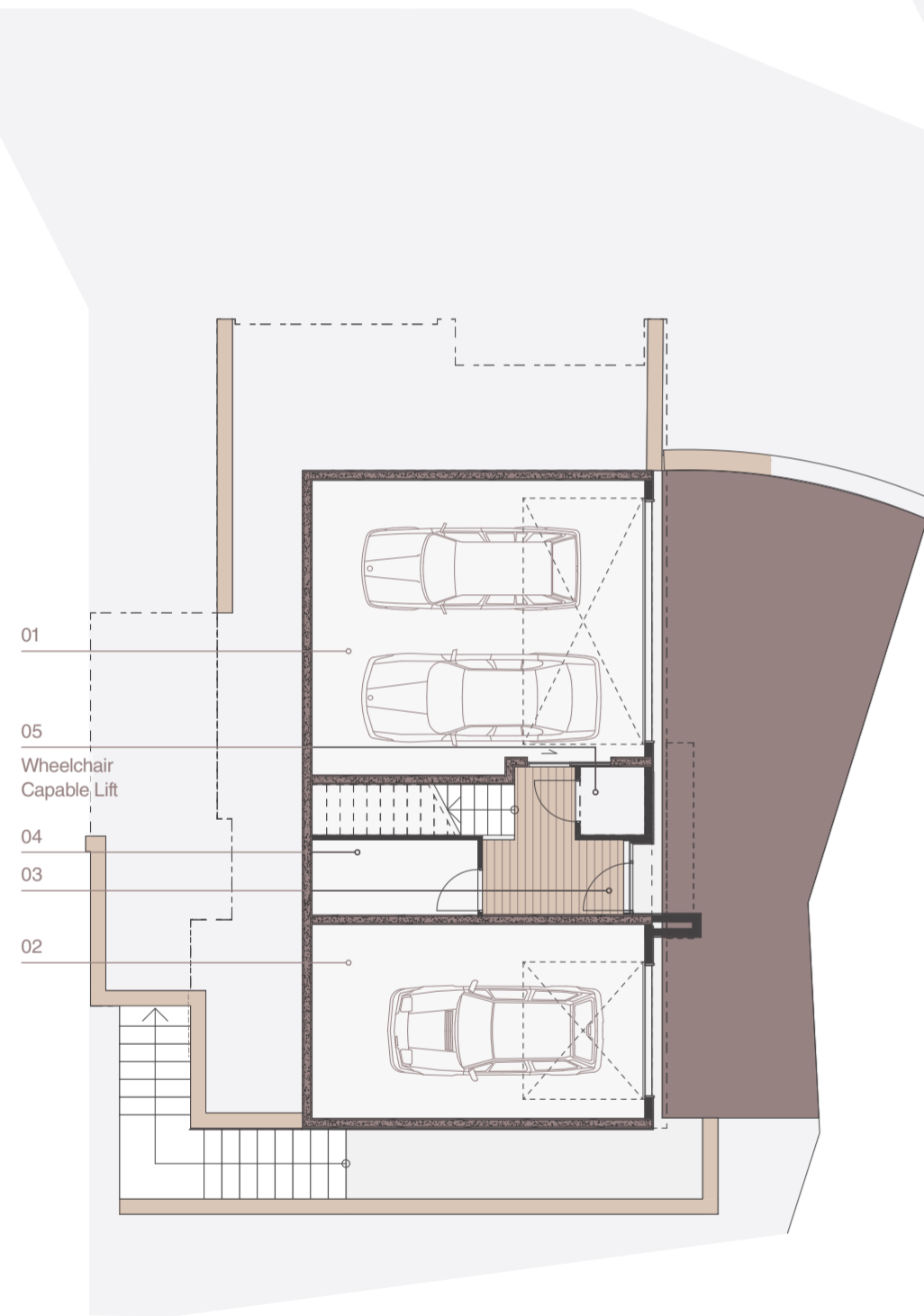


# Residence Four

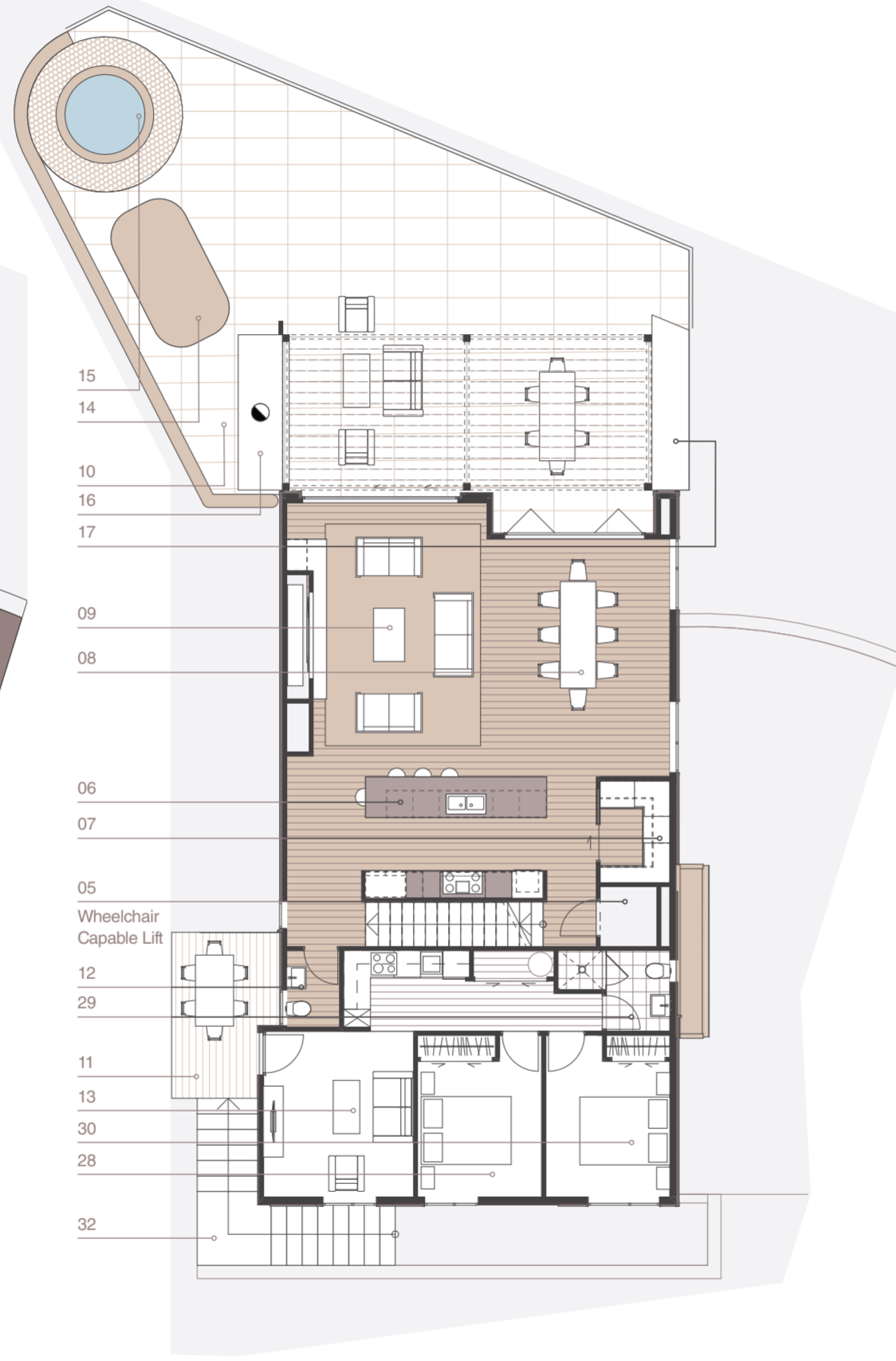
Bedroom: 6  
 Bathroom: 4.5  
 Car: 3

Internal: 360sqm (approx)  
 Gross Land Size: 871sqm (approx)  
 Net Land Size: 450sqm (approx)



Basement Level

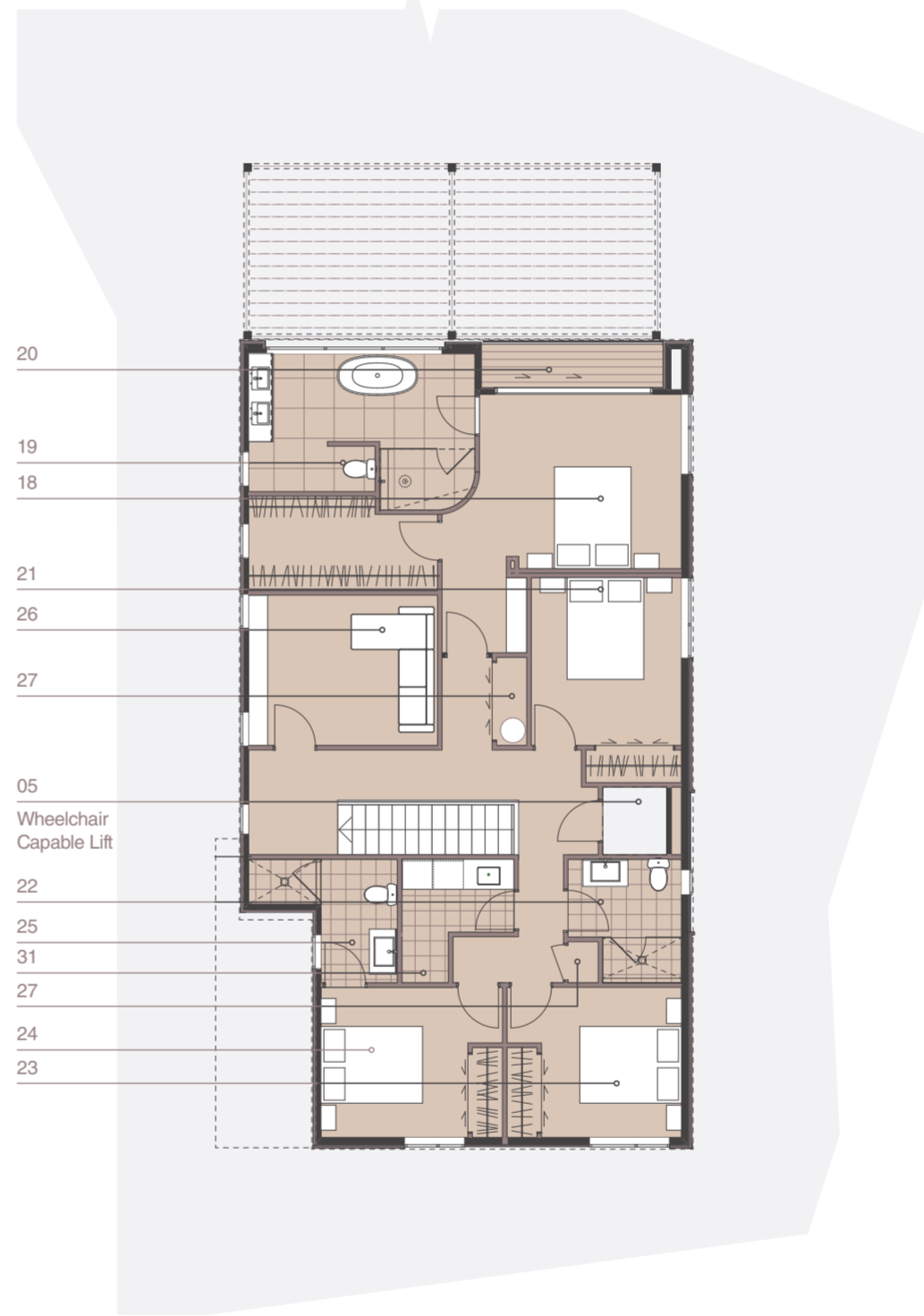
- Legend**
- 01. Double Garage — Residence
  - 02. Single Garage — Apartment
  - 03. Entry Foyer
  - 04. Store Room
  - 05. Wheelchair Capable Lift
  - 06. Kitchen
  - 07. Pantry
  - 08. Dining
  - 09. Living



Ground Level

- 10. Outdoor Living
- 11. Deck — Apartment
- 12. Powder Room
- 13. Lounge — Apartment
- 14. Sauna
- 15. Spa
- 16. Outdoor Fireplace
- 17. Outdoor Kitchen/Bar
- 18. Master Bedroom
- 19. Master Ensuite
- 20. Master Balcony

**Floorplan Scale:**  
 Floorplans for Basement Level, Ground Level and First Level are scaled at 1:150. Site overview is scaled at 1:200.

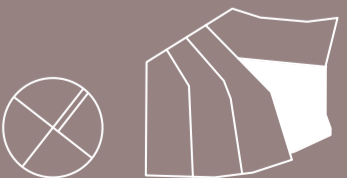
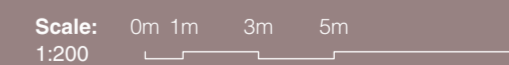
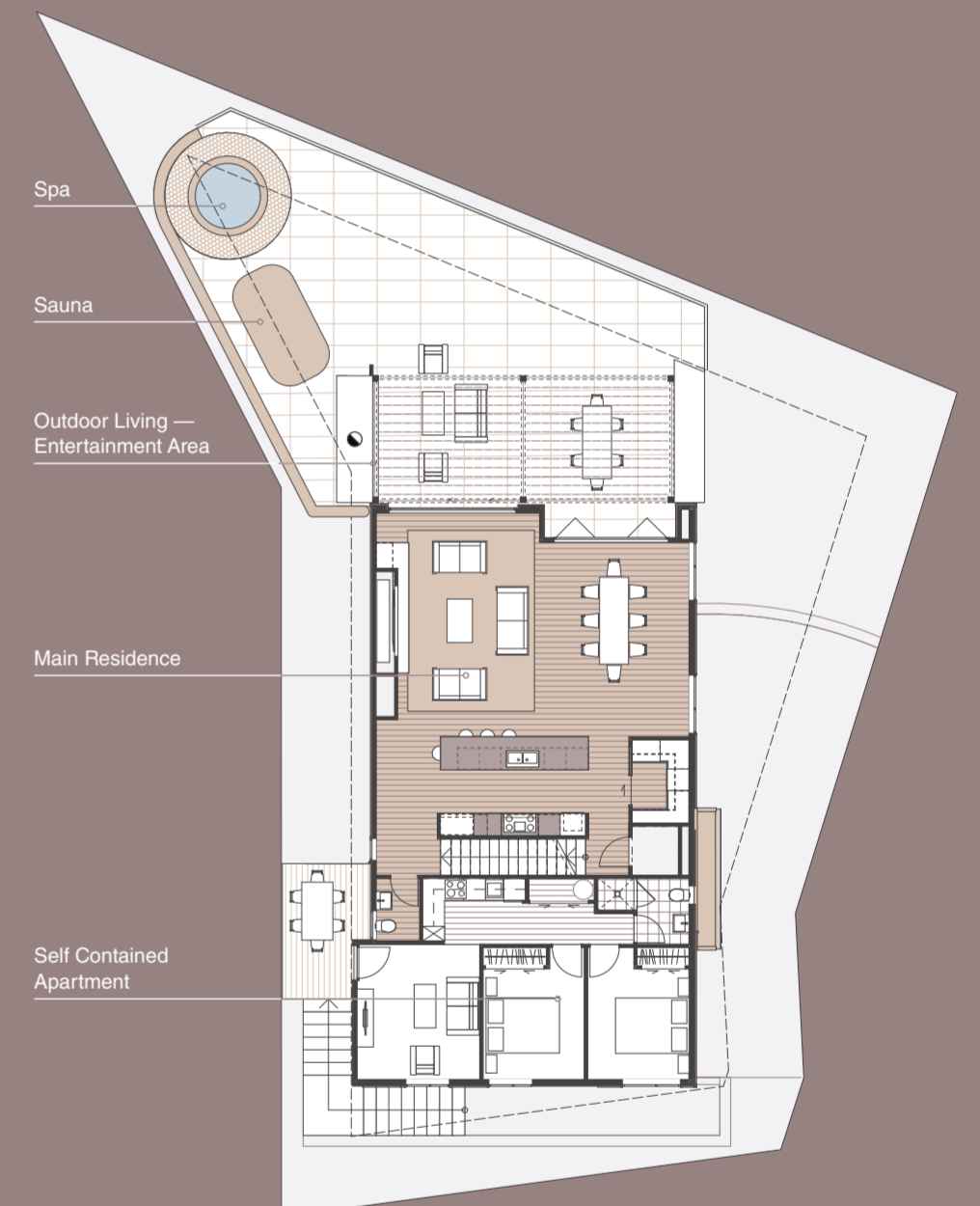


First Level

- 21. Bedroom Two
- 22. Bathroom Two
- 23. Bedroom Three
- 24. Bedroom Four
- 25. Bathroom Four
- 26. Media Room
- 27. Linen Cupboard
- 28. Bedroom Five — Apartment
- 29. Bathroom Five — Apartment
- 30. Bedroom Six — Apartment
- 31. Laundry
- 32. External Apartment Access

# Site Overview

Surrounded by complete freedom, the Canyon Ridge vistas are truly unique — just like the lifestyle. These five architecturally designed residences embody fine living immersed in the richness of nature, providing an osmosis of peace and adventure.



All information is approximate and for illustrative purposes only. WHITEFOX NZ PTY LTD and Canyon Ridge Villas Limited provides no guarantees or warranties on accuracy. Interested parties must conduct their own enquiries and verification. WHITEFOX NZ PTY LTD and Canyon Ridge Villas Limited disclaims liability for any errors or omissions.